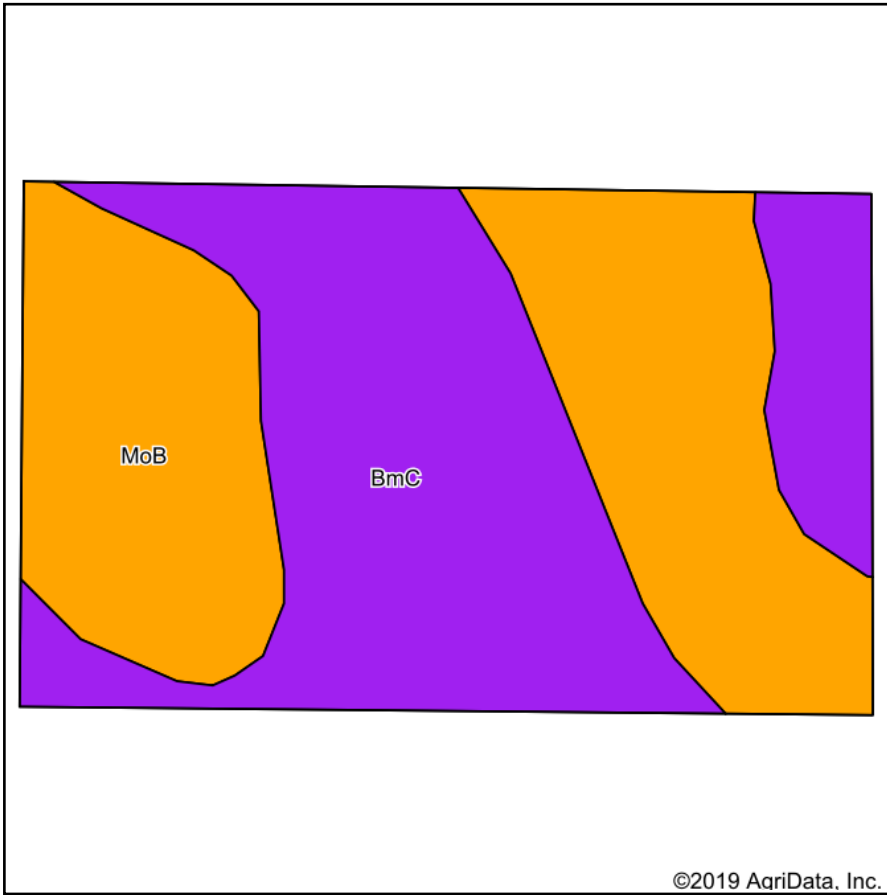
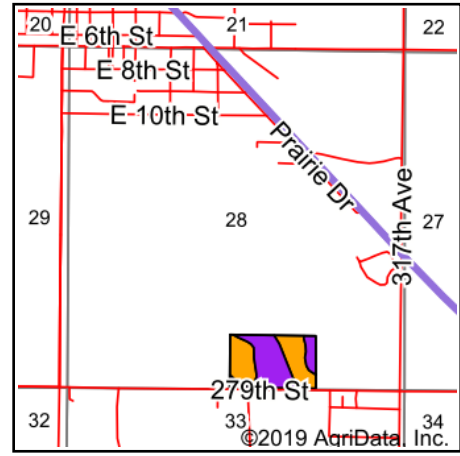


# Soils Map



Soils data provided by USDA and NRCS.



State: **South Dakota**  
 County: **Tripp**  
 Location: **28-99N-76W**  
 Township: **Lamro**  
 Acres: **25**  
 Date: **1/23/2019**



Maps Provided By:



© AgriData, Inc. 2019

www.AgrIDataInc.com



## Area Symbol: SD123, Soil Area Version: 19

Code	Soil Description	Acres	Percent of field	PI Legend	Non-Irr Class *c	Irr Class *c	Productivity Index	*n NCCPI Soybeans
BmC	Boro-Millboro silty clays, 6 to 9 percent slopes	12.68	50.7%		IVe	IVe	56	31
MoB	Millboro silty clay, 3 to 6 percent slopes	12.32	49.3%		IIIe	IIIe	79	28
<b>Weighted Average</b>							<b>67.3</b>	<b>*n 29.5</b>

\*n: The aggregation method is "Weighted Average using major components"

\*c: Using Capabilities Class Dominant Condition Aggregation Method

Soils data provided by USDA and NRCS.